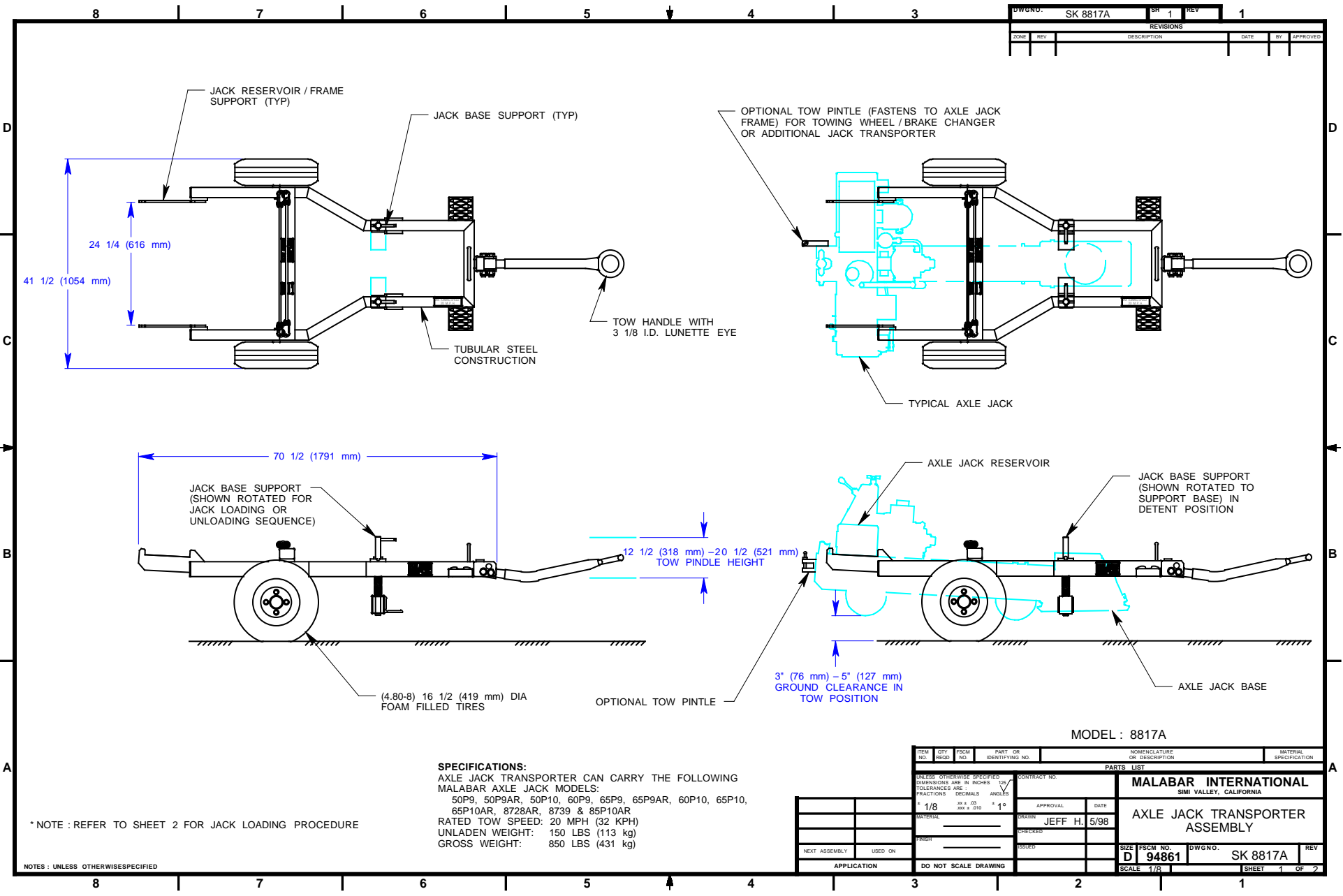


DWGNO: SK 8817A		DR 1	REV 1
REVISIONS			
ZONE	REV	DESCRIPTION	DATE



MODEL : 8817A

SPECIFICATIONS:
 AXLE JACK TRANSPORTER CAN CARRY THE FOLLOWING
 MALABAR AXLE JACK MODELS:
 50P9, 50P9AR, 50P10, 60P9, 65P9, 65P9AR, 60P10, 65P10,
 65P10AR, 8728AR, 8739 & 85P10AR
 RATED TOW SPEED: 20 MPH (32 KPH)
 UNLADEN WEIGHT: 150 LBS (113 kg)
 GROSS WEIGHT: 850 LBS (431 kg)

* NOTE : REFER TO SHEET 2 FOR JACK LOADING PROCEDURE

NOTES : UNLESS OTHERWISE SPECIFIED

ITEM NO.	QTY REQD.	FSCM NO.	PART OR IDENTIFYING NO.	NOMENCLATURE OR DESCRIPTION	MATERIAL SPECIFICATION
PARTS LIST					
UNLESS OTHERWISE SPECIFIED DIMENSIONS ARE IN INCHES			CONTRACT NO.		
TOLERANCES ARE			APPROVAL DATE		
FRACTIONS DECIMALS ANGLES			DRAWN JEFF H. 5/98		
MATERIAL			CHECKED		
FINISH			ISSUED		
NEXT ASSEMBLY USED ON			SCALE 1/8"		
APPLICATION			DO NOT SCALE DRAWING		

MALABAR INTERNATIONAL SIMI VALLEY, CALIFORNIA	
AXLE JACK TRANSPORTER ASSEMBLY	
SIZE FSCM NO. DWGNO. SK 8817A	REV
D 94861	
SCALE 1/8"	SHEET 1 OF 2

8

7

6

5

4

3

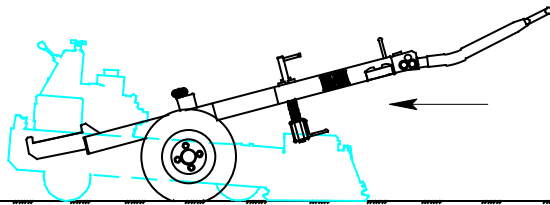
DWGNO. SK 8817A		SH 2	REV 1
REVISIONS			
ZONE	REV	DESCRIPTION	DATE

D

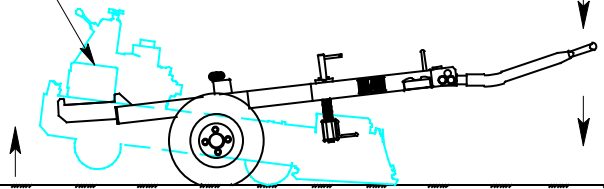
D

POSITION TRANSPORTER

RAISE JACK WITH TRANSPORTER



JACK RESERVOIR



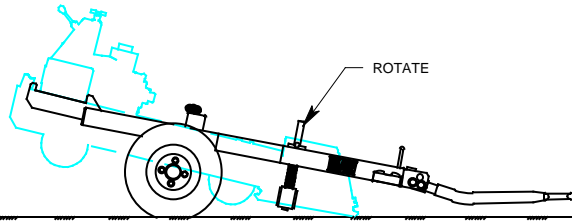
STEP 1
POSITION TRANSPORTER AS SHOWN WITH TOW
HANDLE IN LOAD POSITION

STEP 2
PUSH TRANSPORTER DOWN AT TOW HANDLE
AND RAISE RESERVOIR END OF AXLE JACK

C

C

ENGAGE BASE SUPPORTS



ROTATE

AXLE JACK LOAD (UNLOAD) PROCEDURE

STEP 3
ROTATE BOTH JACK BASE SUPPORTS UNTIL
THEY LOCK INTO POSITION UNDER JACK BASE

B

B

A

A

*NOTE: FOLLOW STEPS 1 THRU 3 ABOVE FOR LOADING AXLE JACK ONTO TRANSPORTER.
REVERSE PROCEDURE FOR UNLOADING AXLE JACK

NOTES: UNLESS OTHERWISE SPECIFIED

MODEL : 8817A

ITEM NO.	QTY REQD	FSCM NO.	PART OR IDENTIFYING NO.	NOMENCLATURE OR DESCRIPTION	MATERIAL SPECIFICATION
PARTS LIST					
UNLESS OTHERWISE SPECIFIED DIMENSIONS ARE IN INCHES FRACTIONS DECIMALS ANGLES			CONTRACT NO.		
1/8 00 x .03 300 x .050			APPROVAL DATE		
MATERIAL			DRAWN		
FINISH			CHECKED		
NEXT ASSEMBLY USED ON			ISSUED		
APPLICATION			DO NOT SCALE DRAWING		
MALABAR INTERNATIONAL SIMI VALLEY, CALIFORNIA				AXLE JACK TRANSPORTER	
SIZE D		FSCM NO. 94861		DWGNO. SK 8817A	
SCALE 1/8		SHEET 2		OF 2	

8

7

6

5

4

3

2

1