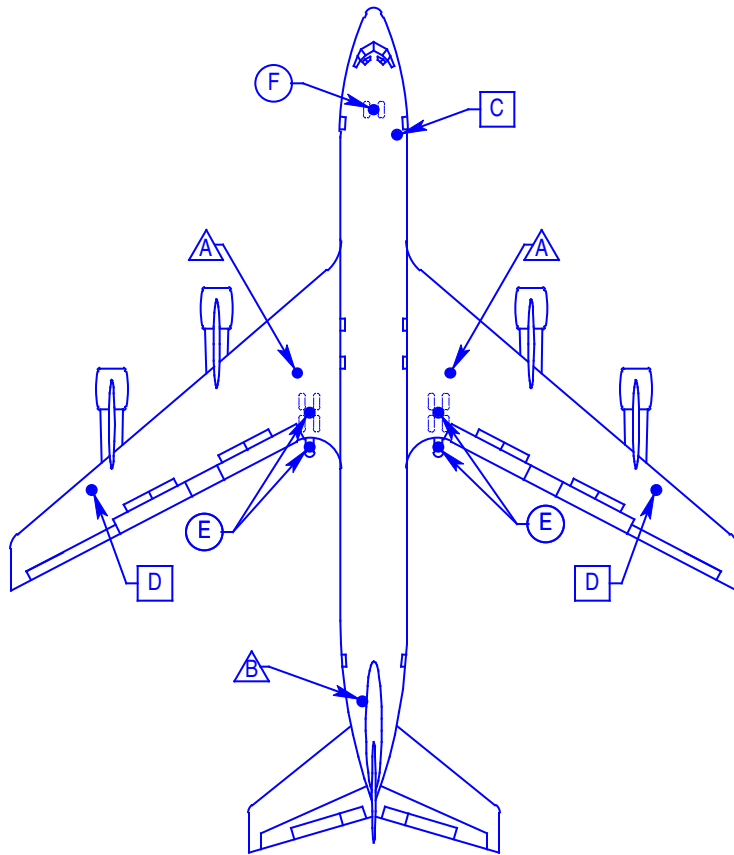


Legend:  $\triangle$  Aircraft primary tripod jack location  
 $\square$  Aircraft auxiliary tripod jack location  
 $\circ$  Aircraft axle jack location



BOEING 707 SHOWN

FOR ALTERNATE JACK SELECTIONS, REFER TO  
 "RECOMMENDED MALABAR AIRCRAFT JACK MODELS" CHART

AIRCRAFT DATA						MALABAR JACK MODELS AND DATA					
REF.	LOCATION & SERVICE	MAX. JACK LOAD	MIN. HT.	MAX. HT.	DISTANCE BETWEEN TIRES	MODEL	CAP.	MIN. HT.	HYD. LIFT	SCR. EXT.	MAX. HT.
A	Main Wing: Gear Swing	42.0 (38.1)	76.00 (1930)	103.00 (2616)		759A	50 (45.4)	60 (1524)	44 (1118)	16 (406)	120 (3048)
B	Aft: Gear Swing	7.1 (6.4)	122.00 (3099)	153.00 (3886)		713A {1}	12 (10.9)	120 (3048)	44 (1118)	10 (254)	174 (4420)
C	Forward: Gear Swing	9.5 (8.6)	72.00 (1829)	100.00 (2540)		718A	20 (18.1)	54 (1372)	40 (1016)	10 (254)	104 (2642)
D	Wing Tip: Gear Swing	6.0 (5.4)	130.00 (3302)	171.00 (4343)		713A {1}	12 (10.9)	120 (3048)	44 (1118)	10 (254)	174 (4420)
E	MLG: Routine	39.3 (35.7)	11.20 (284)	18.70 (475)	18.00 (457)	50P9AR	50 (45.4)	9.13 (232)	9.75 (248)	4.13 (105)	23 (584)
	MLG: Flats		6.10 (155)		12.00 (305)	65L4.5 {2}	65 (59)	4.5 (114)	17.5 (445)	0	22 (559)
F	NLG: Routine	17.4 (15.8)	11.70 (297)	16.60 (422)	8.80 (224)	50P9AR	50 (45.4)	9.13 (232)	9.75 (248)	4.13 (105)	23 (584)
	NLG: Flats		7.80 (198)		6.30 (160)						

Notes:

- **Caution:** Aircraft manufacturer's specifications and instructions must be followed. In the event of contradiction between aircraft manufacturer's specifications and Malabar's, aircraft manufacturer's specifications will prevail.
- Capacities shown in tons and (metric tons). Dimensions shown in inches and (millimeters).
- Tripod jack point heights are based on:
  - Main & nose landing gear strut oleos at normal operating empty weight (OEW).
  - Main gear tires 40 x 14-24.
  - Nose gear tires 34 x 9.9-12.
  - All tires at normal inflation pressure.

{1} Specify with leg extensions.

{2} Lift provided by 65P10 or 65P10AR axle jack.

MALABAR INTERNATIONAL  
 SIMI VALLEY, CALIFORNIA

**BOEING 707 / 720  
 AIRCRAFT / JACK DATA**

REVISED DATE: JUNE 23, 1998