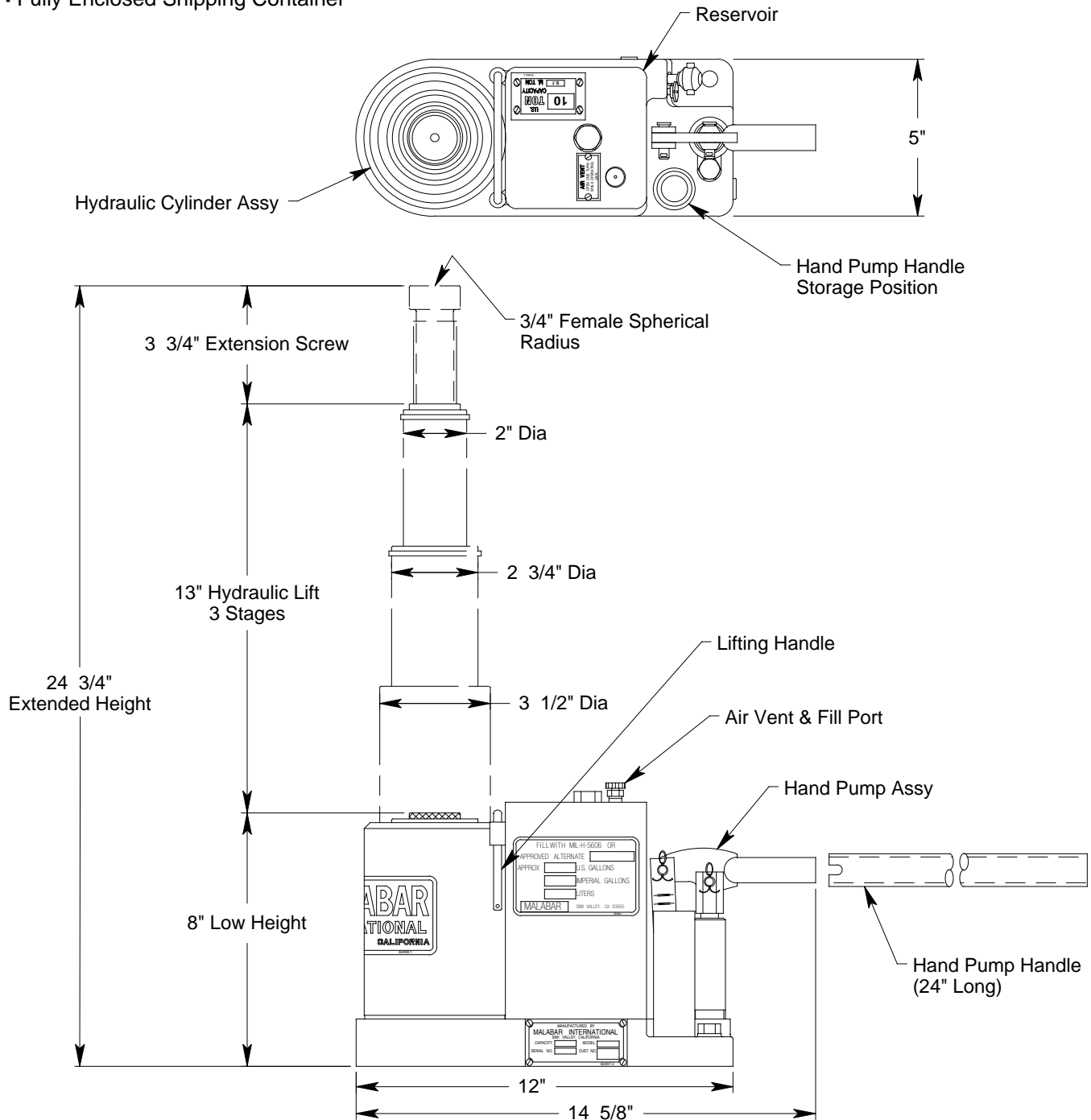


MODEL 648A 10 TON AXLE JACK

JACK INCLUDES:

- Hard Chrome Plated Cylinder and Plunger Bores
- Extension screw and hand pump parts are plated to resist corrosion
- Manual Hand Pump
- Skydrol Resistant Paint (safety yellow)
- Factory Proof Load @ 150% of rated capacity
- 1 Year Warranty
- Fully Enclosed Shipping Container

Model 648A is built to withstand harsh environmental conditions, rugged use and to provide many years of continuous service. Our customers are guaranteed a quality product with each purchase and are assured of our continued product support whenever and wherever the need arises.



See Reverse Side for Specifications, Options, Aircraft Applications & Shipping Data

MODEL 648A 10 TON AXLE JACK

SPECIFICATIONS

Rated Capacity: 10 tons (9.1 m. tons)
Side Load: 15% of vertical load
Low Height: 8 inches (203 mm)
Hydraulic Lift: 13 inches (330 mm)
Extension Screw: 3.75 inches (95 mm)
Total Extended Height: 24.75 inches (629 mm)
Oil Pressure at Rated Capacity: 5140 psig (361 kg/sq cm)
Safety Pop-off Valve set at: 11 tons (10.0 m. tons)
Proof Load: 15 tons (13.6 m. tons)
Reservoir Capacity: 0.5 gallons (1.9 liters)
Hydraulic Fluid: MIL-H-5606 or equivalent
Approximate Jack Net Weight: 50 lbs (23 kg)

MODEL 648A TYPICAL AIRCRAFT APPLICATIONS

Nose Landing Gear

B727, B737-600 thru -800

OPTIONAL EQUIPMENT CODES: (Specify at time of order)

SPC: Special Paint Color (yellow is standard)

648APK: Repair Kit

SHIPPING DATA

NOTE: Model 648A jack is shipped in a fully enclosed shipping container.

Length inch (mm)	Width inch (mm)	Height inch (mm)	Weight lbs (kg)
26 (660)	9 (229)	18 (457)	75 (34)