

MODEL 8842 45 TON AXLE JACK

JACK INCLUDES:

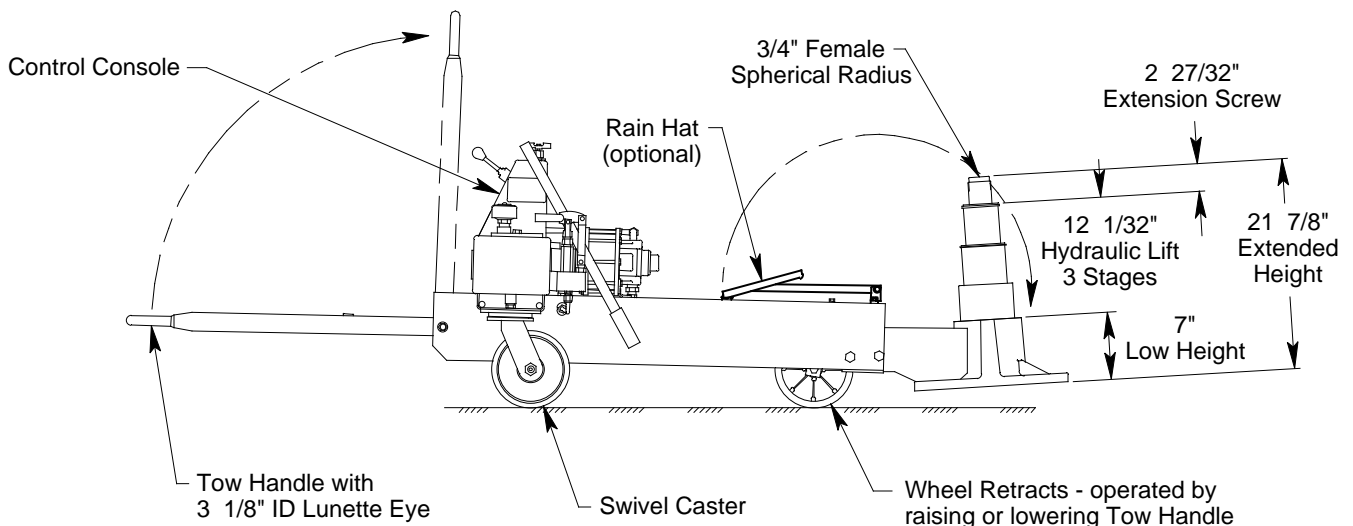
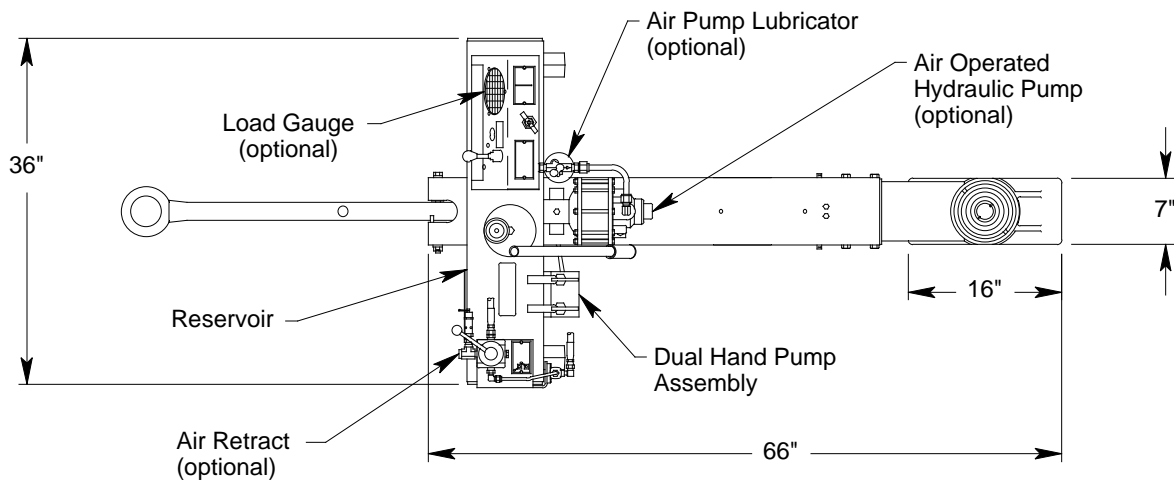
- Hard Chrome Plated Cylinder and Plunger Bores
- Single Valve Control for simple and easy aircraft raising and lowering.
- Control Console with all controls conveniently mounted for ease of operation
- 8" diameter Heavy Duty Swivel Casters and Retractable Front Wheel with Skydrol resistant tread. The tow handle actuated Front Wheel provides improved ground clearance for towing
- Hydraulic Fuse at the cylinder assembly prevents lowering of load in the event of a fluid line failure
- Two Manual Hand Pumps (one high pressure, low volume and one low pressure, high volume)
- Oil Filter Cap with filtered air vent and dipstick
- All unpainted parts are plated to resist corrosion
- Skydrol Resistant Paint (safety yellow)

- Factory Proof Load tested
- 1 Year Warranty
- Fully Enclosed Shipping Container with Skid

STANDARD OPTIONS:

- Air Operated Hydraulic Pump
- Load Gauge for load indication (reads tons/psig)
- Air Line Lubricator (for air operated hydraulic pump)
- Rain Hat (covers cylinder assembly)
- Air Retract (for fast plunger retraction)

Model 8842 is built to withstand harsh environmental conditions, rugged use and to provide many years of continuous service. Our customers are guaranteed a quality product with each purchase and are assured of our continued product support whenever and wherever the need arises.



See Reverse Side for Specifications, Options, Aircraft Applications & Shipping Data

MODEL 8842 45 TON AXLE JACK

SPECIFICATIONS

Rated Capacity: 45 tons (40.8 m. tons)
 Side Load: 15% of vertical load
 Low Height: 7.00 inches (178 mm)
 Hydraulic Lift: 12.03 inches (306 mm)
 Extension Screw: 2.84 inches (72 mm)
 Total Extended Height: 21.88 inches (556 mm)
 Base Width: 7.00 inches (178 mm)
 Cylinder Diameter: 7.12 inches (181 mm)
 Oil Pressure at Rated Capacity: 7650 psig (538 kg/sq cm)
 Safety Pop-off Valve set at: 47.3 tons (42.9 m. tons)
 Proof Load: 62.5 tons (56.7 m. tons)
 Floor Loading at Rated Capacity: 824 psi (58 kg/sq cm)
 Reservoir Capacity: 5.5 gallons (20.8 liters)
 Hydraulic Fluid: MIL-H-5606 or equivalent
 Maximum Towing Speed: 5 mph (8 km/h)
 Approximate Jack Net Weight: 450 lbs (204 kg)

MODEL 8842 TYPICAL AIRCRAFT APPLICATIONS

Main Landing Gear	Nose Landing Gear
A319, A320, A321, B717, B727, B737 B757, DC9, F100, MD80, MD90	A319, A320, A321, B727, B737, B757

OPTIONAL EQUIPMENT CODES: (Specify at time of order)

AP: Air Operated Hydraulic Pump
 GA: Load Gauge
 LU: Lubricator (requires air operated hydraulic pump)
 RH: Rain Hat
 AR: Air Retract
 SPC: Special Paint Color (yellow is standard)

JACK ACCESSORIES: (Order separately)

8842PK: Repair Kit
 871420: Tire Slave Kit (to operate air operated hydraulic pump from aircraft tire)
 880470: Lift Ring Kit (provides three lift points to lift jack assembly)
 881700: Model 8817 Universal Axle Jack Transporter (trailer for long distance, high speed towing)

SHIPPING DATA

NOTE: Unless otherwise specified, Model 8842 jack is shipped on a wood skid with an enclosed cover. Refer to Malabar Axle Jack Shipping Supplement for additional packaging information.

Length inch (mm)	Width inch (mm)	Height inch (mm)	Weight lbs (kg)
75 (1905)	45 (1143)	39 (991)	510 (231)