

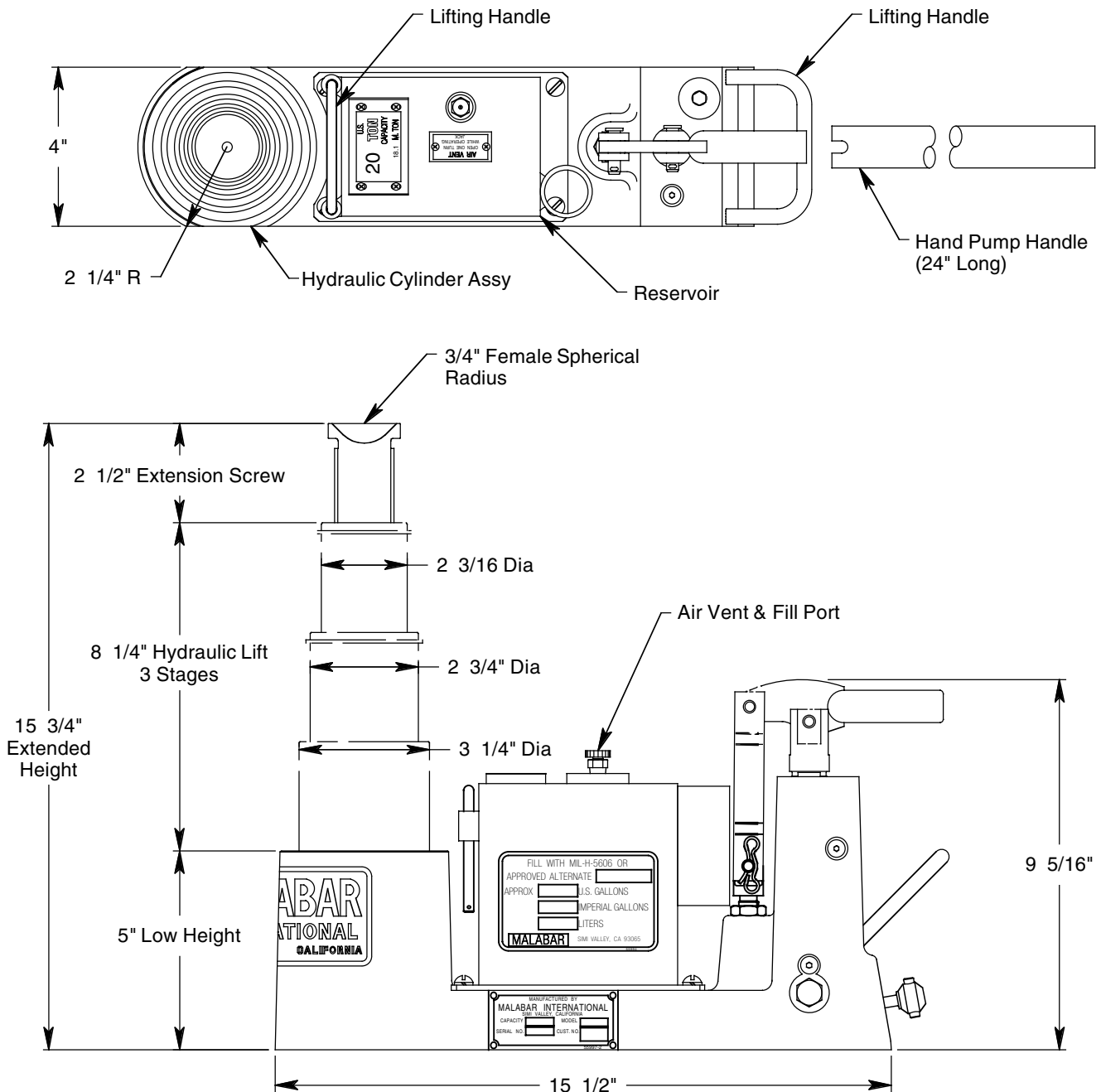
MODEL 8890 20 TON AXLE JACK

JACK INCLUDES:

- Hard Chrome Plated Cylinder and Plunger Bores
- Extension screw and hand pump parts are plated to resist corrosion
- Two Stage Hand Pump for rapid cylinder extension (high pressure/low volume and low pressure/high volume)
- Safety Pop-off Valve
- Skydrol Resistant Paint (safety yellow)
- Factory Proof Load @ 150% of rated capacity

- 1 Year Warranty
- Fully Enclosed Shipping Container

Model 8890 is built to withstand harsh environmental conditions, rugged use and to provide many years of continuous service. Our customers are guaranteed a quality product with each purchase and are assured of our continued product support whenever and wherever the need arises.



See Reverse Side for Specifications, Options, Aircraft Applications & Shipping Data

MODEL 8890 20 TON AXLE JACK

SPECIFICATIONS

Rated Capacity: 20 tons (18.1 m. tons)
 Side Load: 15% of vertical load
 Low Height: 5.0 inches (127 mm)
 Hydraulic Lift: 8.25 inches (210 mm)
 Extension Screw: 2.50 inches (64 mm)
 Total Extended Height: 15.75 inches (400 mm)
 Oil Pressure at Rated Capacity: 9050 psig (636 kg/sq cm)
 Safety Pop-off Valve set at: 22 tons (20.0 m. tons)
 Proof Load: 30 tons (27.2 m. tons)
 Reservoir Capacity: 0.35 gallons (1.3 liters)
 Hydraulic Fluid: MIL-H-5606 or equivalent
 Approximate Jack Net Weight: 60 lbs (27.2 kg)

MODEL 8890 TYPICAL AIRCRAFT APPLICATIONS

Nose Landing Gear	Main Landing Gear
A319*, A320*, A321*, B717, B737, DC9, MD80, MD90, CRJ, DASH 8, Q400, GLOBAL EXPRESS, CHALLENGER, EMB 145/175/190	CRJ, DASH 8, Q400, GLOBAL EXPRESS, CHALLENGER, EMB 145/175/190
*Routine and dual flats	

OPTIONAL EQUIPMENT CODES: (Specify at time of order)

SPC: Special Paint Color (yellow is standard)
 8890PK: Repair Kit

SHIPPING DATA

NOTE: Model 8890 jack is shipped in a fully enclosed shipping container.

Length inch (mm)	Width inch (mm)	Height inch (mm)	Weight lbs (kg)
26 (660)	6 (152)	13 (330)	75 (34)