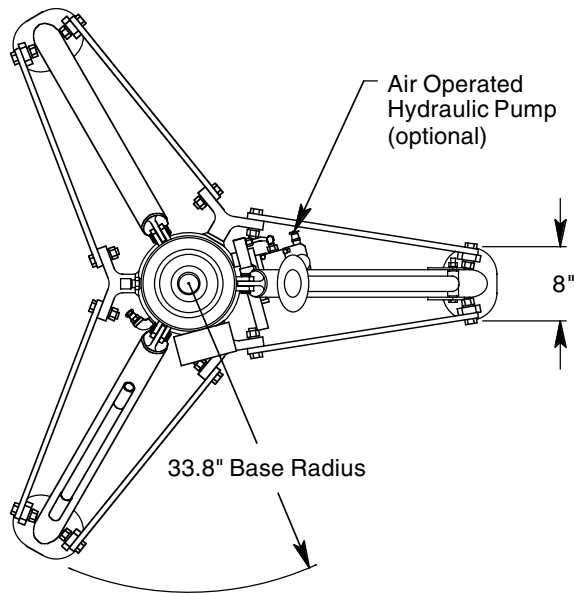


## MODEL 7215B 15 TON FIXED HEIGHT TRIPOD JACK



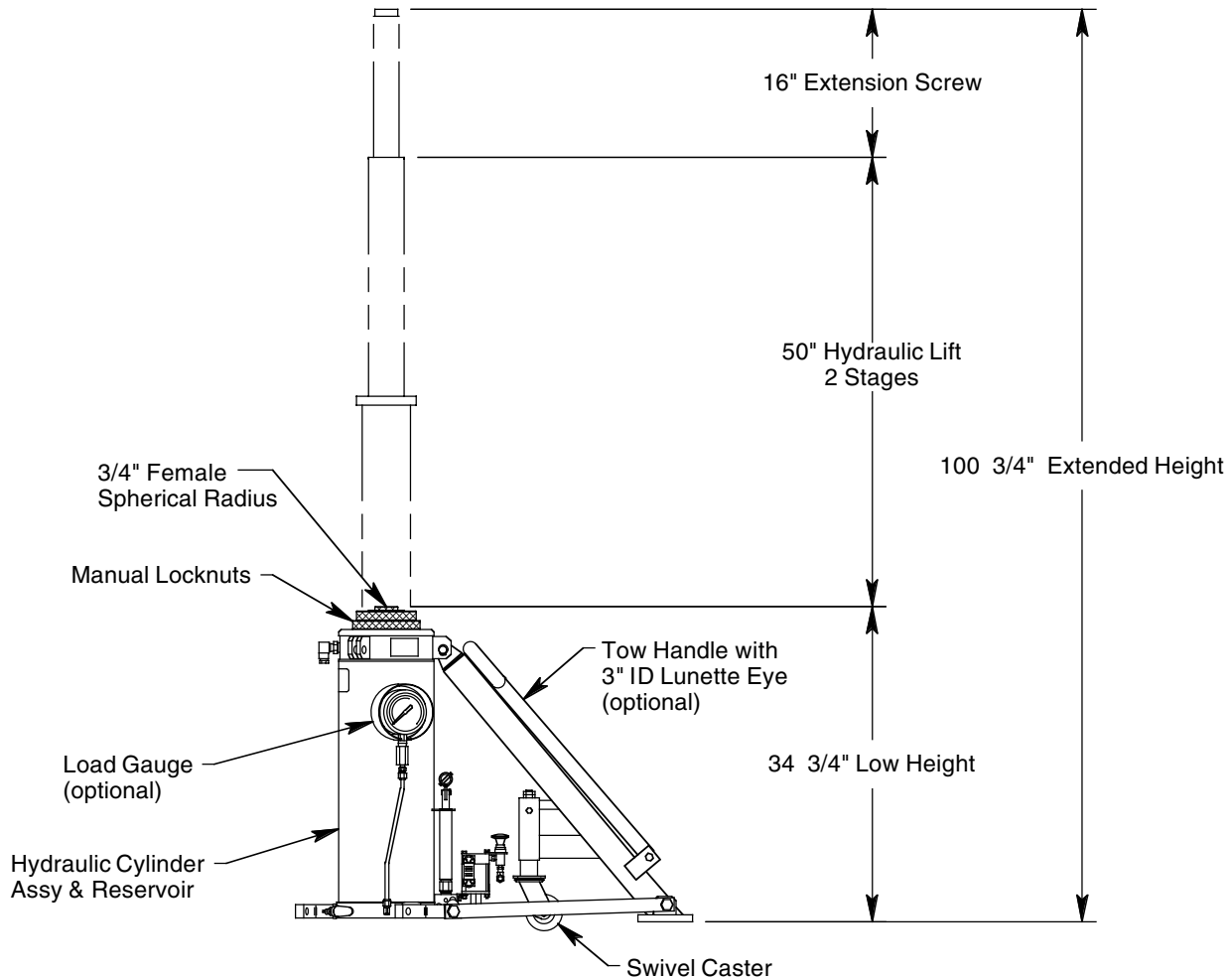
**JACK INCLUDES:**

- Manual Hand Pump with high, medium and low pressure operating positions
- Heavy Duty Swivel Casters
- Rain Hat (covers jack upper head)
- Hard Chrome Plated Cylinder Bore
- All unpainted parts are plated to resist corrosion
- Skydrol Resistant Paint (safety yellow)
- Factory Proof Load @ 150% of rated capacity
- 3 Year Warranty
- Shipping Skid

**STANDARD OPTIONS:**

- Air Operated Hydraulic Pump
- Load Gauge for load indication (reads tons/psig)
- Tow Handle for ease of towing

Model 7215B is built to withstand harsh environmental conditions, rugged use and to provide many years of continuous service. Our customers are guaranteed a quality product with each purchase and are assured of our continued product support whenever and wherever the need arises.



See Reverse Side for Specifications, Options, Aircraft Applications & Shipping Data

# MODEL 7215B

## 15 TON FIXED HEIGHT TRIPOD JACK

### SPECIFICATIONS

Rated Capacity: 15 tons (13.6 m. tons)  
 Side Load: 15% of vertical load  
 Roll Under Height: 35.75 inches (908 mm)  
 Low Height: 34.75 inches (883 mm)  
 Hydraulic Lift: 50 inches (1270 mm)  
 Extension Screw: 16 inches (406 mm)  
 Total Extended Height: 100.75 inches (2559 mm)  
 Oil Pressure at Rated Capacity: 2090 psig (147 kg/sq cm)  
 Safety Pop-off Valve set at: 16.5 tons (15.0 m. tons)  
 Proof Load: 22.5 tons (20.4 m. tons)  
 Reservoir Capacity: 5.0 gallons (18.9 liters)  
 Hydraulic Fluid: MIL-H-5606 or equivalent  
 Approximate Jack Net Weight: 700 lbs (318 kg)

### MODEL 7215B TYPICAL AIRCRAFT APPLICATIONS

Aft Fuselage

B717, DC9, MD80/90

#### OPTIONAL EQUIPMENT CODES: (Specify at time of order)

AP: Air Operated Hydraulic Pump  
 GA: Load Gauge  
 TH: Tow Handle  
 SPC: Special Paint Color (yellow is standard)  
 7215BPK: Repair Kit

#### PACKAGING CODES & OPTIONS: (Specify at time of order)

— : Domestic Skid - Jack Set-up  
 KD: Domestic Skid - Jack Knocked Down (Additional Cost)  
 EC: Export Crate - Jack Set-up (Additional Cost)  
 ECKD: Export Crate - Jack Knocked Down (Additional Cost)

### SHIPPING DATA

NOTE: Unless otherwise specified, Model 7215B jack is shipped on a wood skid in the set-up condition. Refer to Malabar Tripod Jack Shipping Supplement for additional packaging information.

Packaging Code	Length inch (mm)	Width inch (mm)	Height inch (mm)	Weight lbs (kg)
—	69 (1753)	59 (1499)	42 (1067)	900 (408)
KD	72 (1829)	40 (1016)	28 (711)	900 (408)
EC	71 (1803)	64 (1626)	45 (1143)	1100 (499)
ECKD	74 (1880)	45 (1143)	31 (787)	1050 (476)