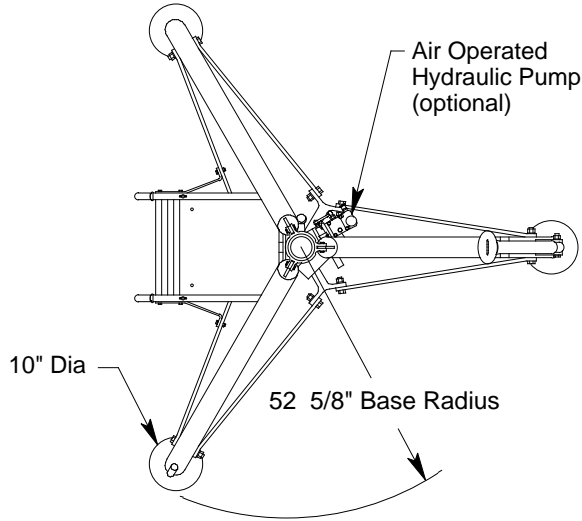


MODEL 8704
5 TON FIXED HEIGHT TRIPOD JACK



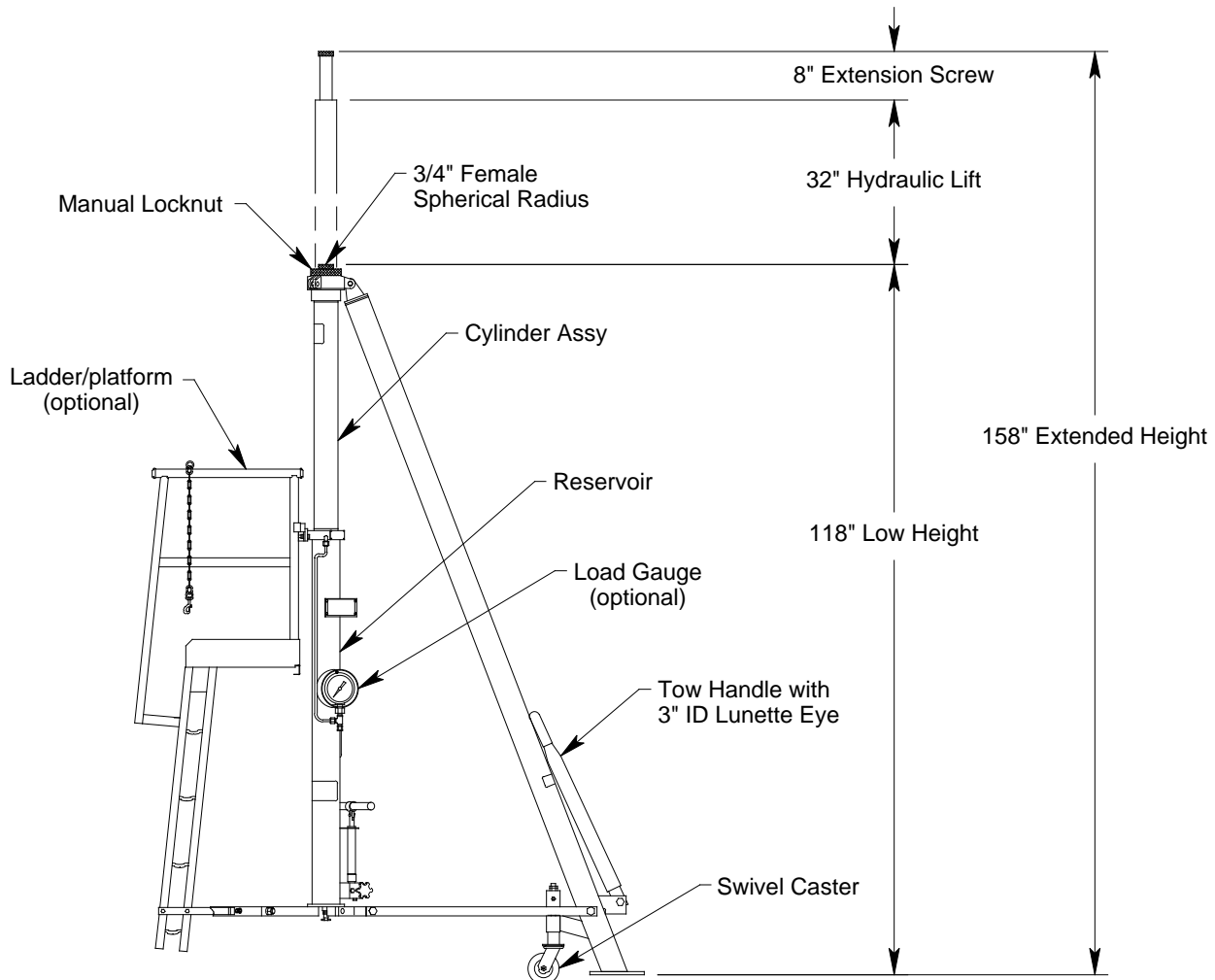
JACK INCLUDES:

- Manual Hand Pump with high, medium and low pressure operating positions
- Heavy Duty Swivel Casters
- Rain Hat (covers jack upper head)
- Hard Chrome Plated Cylinder Bore
- All unpainted parts are plated to resist corrosion
- Skydrol Resistant Paint (safety yellow)
- Factory Proof Load @ 150% of rated capacity
- 3 Year Warranty
- Shipping Skid

STANDARD OPTIONS:

- Air Operated Hydraulic Pump
- Load Gauge for load indication (reads tons/psig)
- Ladder/platform

Model 8704 is built to withstand harsh environmental conditions, rugged use and to provide many years of continuous service. Our customers are guaranteed a quality product with each purchase and are assured of our continued product support whenever and wherever the need arises.



See Reverse Side for Specifications, Options, Aircraft Applications & Shipping Data

MODEL 8704

5 TON FIXED HEIGHT TRIPOD JACK

SPECIFICATIONS

Rated Capacity: 5 tons (4.5 m. tons)
 Side Load: 15% of vertical load
 Roll Under Height: 119 inches (3023 mm)
 Low Height: 118 inches (2997 mm)
 Hydraulic Lift: 32 inches (813 mm)
 Extension Screw: 8 inches (203 mm)
 Total Extended Height: 158 inches (4013 mm)
 Oil Pressure at Rated Capacity: 1030 psig (72.4 kg/sq cm)
 Safety Pop-off Valve set at: 2.25 tons (2.0 m. tons)
 Proof Load: 7.5 tons (6.8 m. tons)
 Reservoir Capacity: 1.8 gallons (6.8 liters)
 Hydraulic Fluid: MIL-H-5606 or equivalent
 Maximum Towing Speed: 5 mph (8 km/h)
 Approximate Jack Net Weight: 1000 lbs (454 kg)

MODEL 8704 TYPICAL AIRCRAFT APPLICATIONS

Aft Fuselage

B757*

*Jack Suitable for Standard Gear Swing.
 Specify Extension Kit p/n 870450 for Oleo Piston Removal

OPTIONAL EQUIPMENT CODES: (Specify at time of order)

AP: Air Operated Hydraulic Pump
 GA: Load Gauge
 LA: Ladder/platform
 SPC: Special Paint Color (yellow is standard)
 8704PK: Repair Kit

PACKAGING CODES & OPTIONS: (Specify at time of order)

KD: Domestic Skid - Jack Knocked Down
 ECKD: Export Crate - Jack Knocked Down (Additional Cost)

SHIPPING DATA

NOTE: Unless otherwise specified, Model 8704 jack is shipped on a wood skid in the knocked down condition. Refer to Malabar Tripod Jack Shipping Supplement for additional packaging information.

Packaging Code	Length inch (mm)	Width inch (mm)	Height inch (mm)	Weight lbs (kg)
KD	130 (3302)	40 (1016)	42 (1067)	1200 (544)
ECKD	132 (3353)	45 (1143)	45 (1143)	1500 (680)