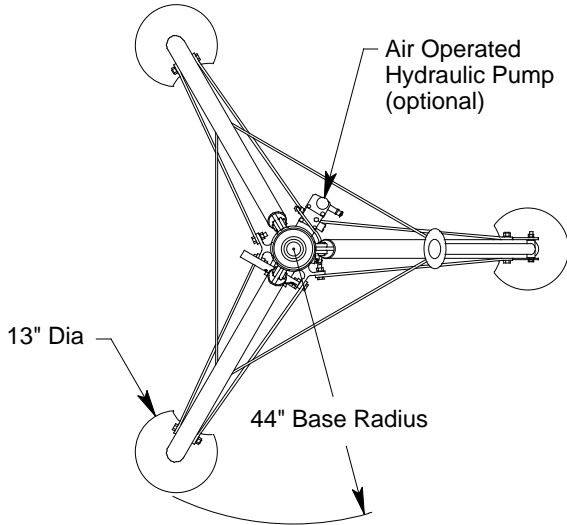


MODEL 8721
10 TON FIXED HEIGHT TRIPOD JACK



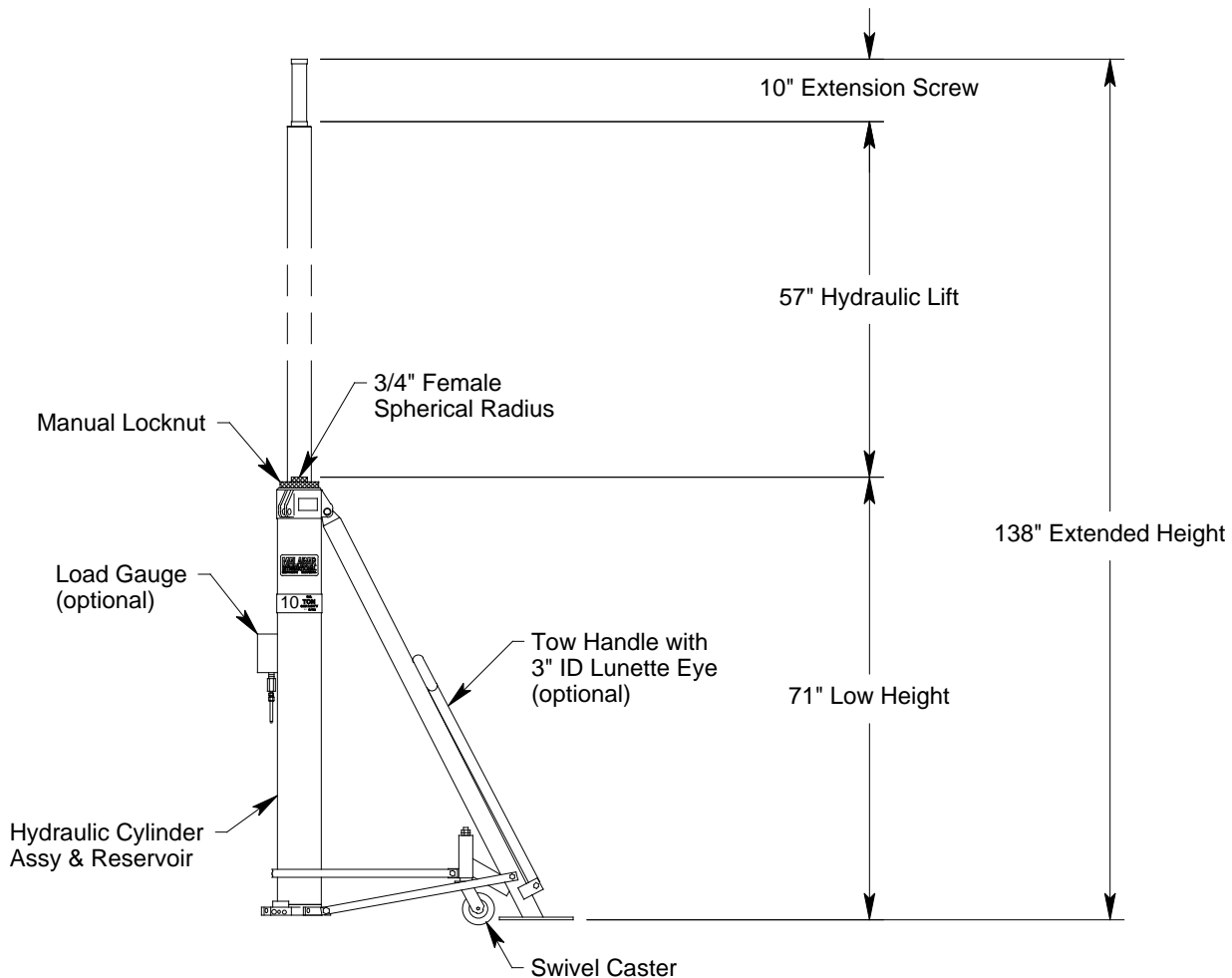
JACK INCLUDES:

- Manual Hand Pump with high, medium and low pressure operating positions
- Heavy Duty Swivel Casters
- Rain Hat (covers jack upper head)
- Hard Chrome Plated Cylinder Bore
- All unpainted parts are plated to resist corrosion
- Skydrol Resistant Paint (safety yellow)
- Factory Proof Load @ 150% of rated capacity
- 3 Year Warranty
- Shipping Skid

STANDARD OPTIONS:

- Air Operated Hydraulic Pump
- Load Gauge for load indication (reads tons/psig)
- Tow Handle for ease of towing

Model 8721 is built to withstand harsh environmental conditions, rugged use and to provide many years of continuous service. Our customers are guaranteed a quality product with each purchase and are assured of our continued product support whenever and wherever the need arises.



See Reverse Side for Specifications, Options, Aircraft Applications & Shipping Data

MODEL 8721

10 TON FIXED HEIGHT TRIPOD JACK

SPECIFICATIONS

Rated Capacity: 10 tons (9.1 m. tons)
 Side Load: 15% of vertical load
 Roll Under Height: 72 inches (1829 mm)
 Low Height: 71 inches (1803 mm)
 Hydraulic Lift: 57 inches (1448 mm)
 Extension Screw: 10 inches (254 mm)
 Total Extended Height: 138 inches (3505 mm)
 Oil Pressure at Rated Capacity: 1400 psig (98 kg/sq cm)
 Safety Pop-off Valve set at: 11 tons (10.0 m. tons)
 Proof Load: 15 tons (13.6 m. tons)
 Reservoir Capacity: 4.1 gallons (15.5 liters)
 Hydraulic Fluid: MIL-H-5606 or equivalent
 Maximum Towing Speed: 5 mph (8 km/h)
 Approximate Jack Net Weight: 600 lbs (272 kg)

MODEL 8721 TYPICAL AIRCRAFT APPLICATIONS

Forward Fuselage

A319, A320, A321, B707, B720, B727

OPTIONAL EQUIPMENT CODES: (Specify at time of order)

AP: Air Operated Hydraulic Pump
 GA: Load Gauge
 TH: Tow Handle
 SPC: Special Paint Color (yellow is standard)
 8721PK: Repair Kit

PACKAGING CODES & OPTIONS: (Specify at time of order)

— : Domestic Skid - Jack Set-up
 KD: Domestic Skid - Jack Knocked Down (Additional Cost)
 EC: Export Crate - Jack Set-up (Additional Cost)
 ECKD: Export Crate - Jack Knocked Down (Additional Cost)

SHIPPING DATA

NOTE: Unless otherwise specified, Model 8721 jack is shipped on a wood skid in the set-up condition. Refer to Malabar Tripod Jack Shipping Supplement for additional packaging information.

Packaging Code	Length inch (mm)	Width inch (mm)	Height inch (mm)	Weight lbs (kg)
—	84 (2134)	73 (1854)	78 (1981)	750 (340)
KD	80 (2032)	40 (1016)	28 (711)	750 (340)
EC	86 (2184)	78 (1981)	81 (2057)	1000 (454)
ECKD	82 (2083)	45 (1143)	31 (787)	900 (408)