

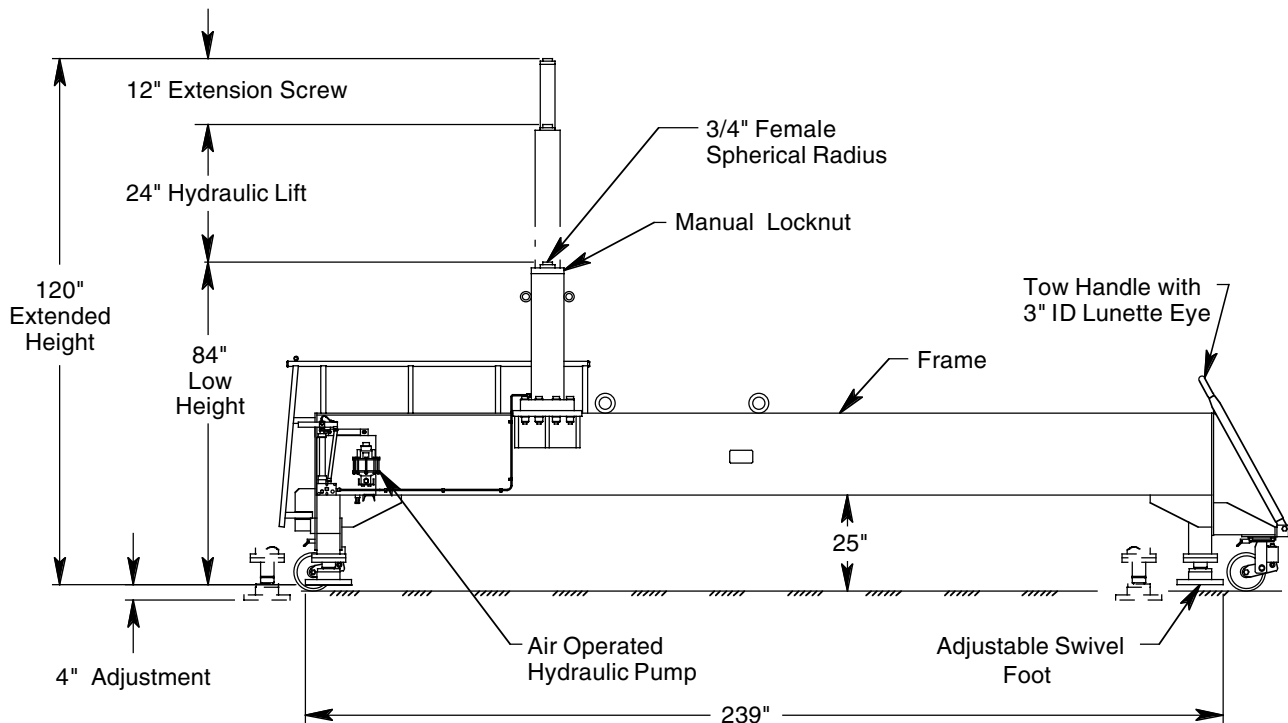
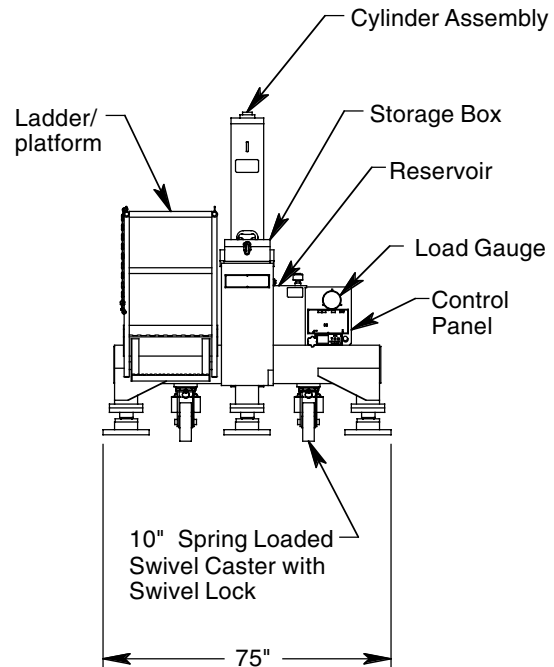
MODEL 8778

45 TON STRUCTURAL FRAME JACK ASSEMBLY

JACK INCLUDES:

- Manual Hand Pump with high, medium and low pressure operating positions
- Air Operated Hydraulic Pump
- Load Gauge for load indication (reads tons/psig)
- Adjustable Swivel Feet for leveling jack
- Ladder/platform
- Heavy Duty Tow Handle and Swivel Casters with Swivel Locks for improved towing
- Hydraulic "Thermal" Relief Valve for added protection and safety in the event of internal fluid expansion due to temperature
- Secondary Cylinder Seal for protection against contaminants and to prolong life of primary seal
- Rain Hat (covers cylinder assembly)
- Hard Chrome Plated Cylinder Bore
- All unpainted parts are plated to resist corrosion
- Skydrol Resistant Paint (safety yellow)
- Factory Proof Load @ 150% of rated capacity
- 3 Year Warranty
- Shipping Skid

Model 8778 is built to withstand harsh environmental conditions, rugged use and to provide many years of continuous service. Our customers are guaranteed a quality product with each purchase and are assured of our continued product support whenever and wherever the need arises.



See Reverse Side for Specifications, Options, Aircraft Applications & Shipping Data

MODEL 8778

45 TON STRUCTURAL FRAME JACK ASSEMBLY

SPECIFICATIONS

Rated Capacity: 45 tons (40.8 m. tons)
 Side Load: 15% of vertical load
 Roll Under Height: 85.5 inches (2172 mm)
 Low Height: 84 inches (2134 mm)
 Hydraulic Lift: 24 inches (610 mm)
 Extension Screw: 12 inches (305 mm)
 Total Extended Height: 120 inches (3048 mm)
 Oil Pressure at Rated Capacity: 2690 psig (189 kg/sq cm)
 Safety Pop-off Valves:
 System Relief Valve set at: 49.5 tons (44.9 m. tons)
 Thermal Relief Valve set at: 56.3 tons (51.0 m. tons)
 Proof Load: 67.5 tons (61.2 m. tons)
 Reservoir Capacity: 7.6 gallons (28.8 liters)
 Hydraulic Fluid: MIL-H-5606 or equivalent
 Maximum Towing Speed: 5 mph (8 km/h)
 Estimated Jack Weight: 6000 lbs (2722 kg)

MODEL 8778 TYPICAL AIRCRAFT APPLICATIONS

Forward Fuselage Shoring Jack
(for Gear Pit Application)

B747, B767, DC10, MD11, A300, A310, A330, A340, L1011

OPTIONAL EQUIPMENT CODES: (Specify at time of order)
 SPC: Special Paint Color (yellow is standard)

JACK ACCESSORIES: (Order separately)
 8778PK: Repair Kit

SHIPPING DATA

NOTE: Unless otherwise specified, Model 8778 jack is shipped on a wood skid in the set-up condition.

Length inch (mm)	Width inch (mm)	Height inch (mm)	Weight lbs (kg)
266 (6756)	78 (1981)	89 (2261)	6700 (3039)